

# Cimego, village of steel and heretics.

Developing identity to build a global  
project of sustainable economy

Michela Zucca



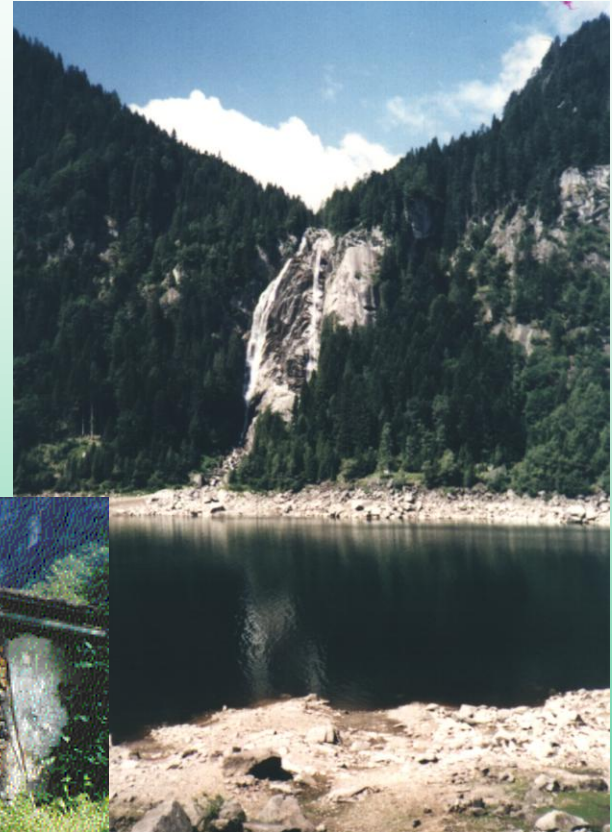
# CIMEGO AND THE TERRITORY

- ◆ Geographical Collocation:
  1. Situated in Chiese Valley, 60 km far from Trento and 80 km from Brescia
  2. 620 m. high
  3. 400 inhabitants
- ◆ Alpine community situated in marginal and disadvantaged areas towards big capital and communication flows

Michela Zucca



# The territory



Michela Zucca

# WHY IN CIMEGO?

- ◆ It has been asked by local authority and associations
- ◆ It is the result of a process of evolution and cultural development lasting several years
- ◆ It has been strongly wanted by the inhabitants and the cultural associations of the village

# THE PRECEDENTS

- ◆ Building of Rio Caino ethnographical trail
- ◆ Reasuration and re-use of the old forges
- ◆ Evaluation of traditional cooking
- ◆ Purchase of Marascalchi House

# THE PRECEDENTS

- ◆ Lectures about heresy in Cimego and on the Alpine territory
- ◆ Organisation of didactic tourism about: popular culture, history of heresy and environment
- ◆ Training course for cultural-touristic guides
- ◆ Gathering and exhibition of old peasant tools
- ◆ European Social Found training course: “Doing business to produce culture: territory development agents”

Michela Zucca



# DOING BUSINESS TO PRODUCE CULTURE

**Territory development agents**

- **Training professional course by the  
European Social Found**

Michela Zucca



# WHO HAS ORGANISED IT?

- ◆ **Kosmos Cooperative:**  
active in sustainable development, professional training, environmental protection and bio architecture



Michela Zucca



# WHO SUPPORTED IT?



- ◆ The Center of alpine ecology in Trento
- ◆ The Touristic consortium Valle del Chiese
- ◆ The research centre Judicaria in Tione

Michela Zucca

# OBJECTIVES

- ◆ Training of qualified professionals able to create sustainable development
- ◆ Gathering of informations
- ◆ Participative planning
- ◆ Individuation of values to elaborate a development project
- ◆ Concrete elaboration of operations of sustainable development

Michela Zucca



# THE TRAINING COURSE AND EUROPEAN UNION

- ◆ Use of Internet and multimedia programmes: communication means to know and work in the European Union
- ◆ Connections with European partners to elaborate common projects (Recite II-Ethnfestival )

Michela Zucca



# PROJECT RECITE II

- ◆ Sustainable development project

Building better relationships among towns  
and countryside using culture

- ◆ European Union founding

Michela Zucca



# CIMEGO AND RECITE II PROJECT

Cimego, with Trentino partners, is in Recite and works with Portugal and Finland in these fields:

- ◆ Rio Caino: ethnographical trail to evaluate nature, environment and cultural-historical heritage
- ◆ Marascalchi House: musealisation

Michela Zucca



# ... CIMEGO AND THE FUTURE...

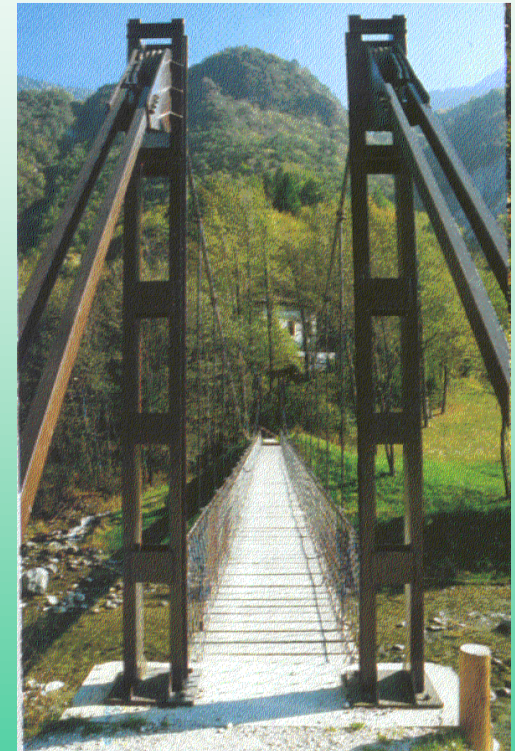
- ◆ **In the future, Cimego will be active in:**
  - **prolonge, improve and advertise “Rio Caino” ethnographical trail, opening a small refreshment place**
  - **open a tourist office**
  - **open a shop selling typical products**
  - **build “Casa Marascalchi” eco museum**
  - **organise “Eurofestival”, cycle of events about European culture and ethno music for young people**

Michela Zucca



# RIO CAINO

- **Inspection and classification of the trees growing on the ethnographical trail Rio Caino**
- **Project of tables on craftman jobs linked with natural resources**
- **Transmission of past cultural values: knowledge and respect for the environment**




Michela Zucca

# MARASCALCHI HOUSE

Together with the people, survey cards have been filled in:


- FIELD
- DIALECT NAME
- ITALIAN NAME
- ETYMOLOGY
- MATERIAL
- MEASURE
- MANUFACTURE
- PERIOD
- PRESERVATION LEVEL
- DESCRIPTION
- FUNCTION

**MUSEO ETNOGRAFICO**



COMUNE DI CIMEGO

Scheda di rilevamento n.:  
**038/FIL**

<b>SETTORE</b>				
Filatura				
<b>NOME DIALETTALE</b>				
Molinèl				
<b>NOME ITALIANO</b>				
Filatoio				
<b>ETIMOLOGIA</b>				
<b>DETTI</b>				
<b>MATERIALE</b>	<b>MISURE</b>			
Legno				
<b>FABBRICAZIONE</b>				
Artigianale				
<b>EDCA</b>	<b>STATO DI CONSERVAZIONE</b>			
fine '900	Buono			
<b>DESCRIZIONE</b>				
Struttura in legno che sostiene una ruota che può girare. La ruota è vuota con dei raggi lavorati. La circonferenza della ruota ha un solco, dove passa il filo collegato con una bobina in legno.				
<b>FUNZIONE</b>				
Filare la lana di pecora				
<b>STATO GIURIDICO</b>				
<b>Proprietario :</b> <b>Luogo di conservazione :</b> Mostra etnografica <b>Donato da :</b>				
<b>LEGENDA</b>				
AGR: Agricoltura	CAC: Caccia	CUC: Cucina	FOR: Forno	RAS: Rastrellio
ALL: Allevamento	CAM: Camera	EMI: Emigrazione	GIO: Giocattoli	SCA: Scalpellino,
BAC: Bachicoltura	CAN: Cantina	FAB: Fabbro	GUE: Guerra	STA: Stalla
BAG: Bagno,	CES: Cestaio	FAL: Falegname	MAL: Malga	TRA: Trasporto
BOS: Boscaiolo	CIA: Ciabattino	FIL: Filatura	MUR: Muratore	VIT: Viticoltura

Michela Zucca



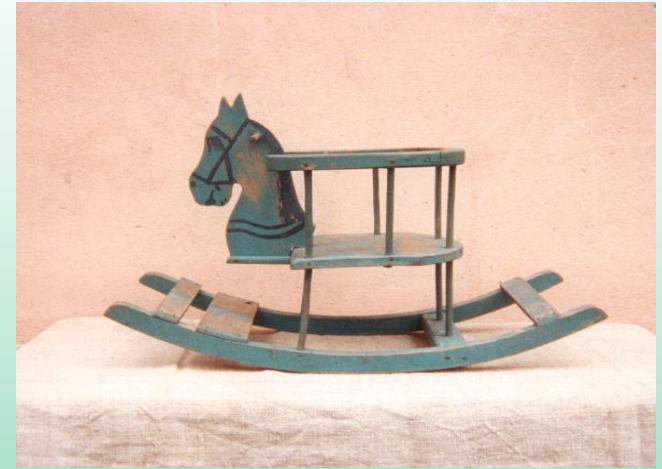
Centro di Ecologia Alpina



# ETNHOGRAPHIC EXHIBITION

**Cultural association “La Fusina”  
has catalogued the object of the  
exhibition, to:**

- **make them available to build the  
Casa Marascalchi Museun**
- **build an archive of traditional  
objects in Cimego**



Michela Zucca



COMUNITÀ EUROPEA



COMUNE DI CIMEGO



**ETN**  **FESTIVAL**

- **European event for young people**
- **Project Culture 2000**
- **Principal subject: ethno music for cultural and linguistic minorities**

Michela Zucca



Centro di Ecologia Alpina

# ETHNOFESTIVAL

- **Cimego partner leader**
- **European partners:  
France, Portugal,  
Finland, Spain**



Michela Zucca



# EUROPEAN SUSTAINABLE VILLAGE NETWORK

- The Network is being defined and built now, by participative planning, with the villages working in Recite and the help of the Multipolar Centres for sustainable development

Michela Zucca

