

A photograph of a traditional wicker basket, likely used for harvesting or carrying, resting on a lush green grassy field. The basket is made of light-colored, woven reeds or willow branches. The background is a soft-focus expanse of green grass, suggesting a rural or alpine setting.

SUSTAINABLE DEVELOPMENT PROCESSES IN MARGINAL ALPINE COMMUNITIES

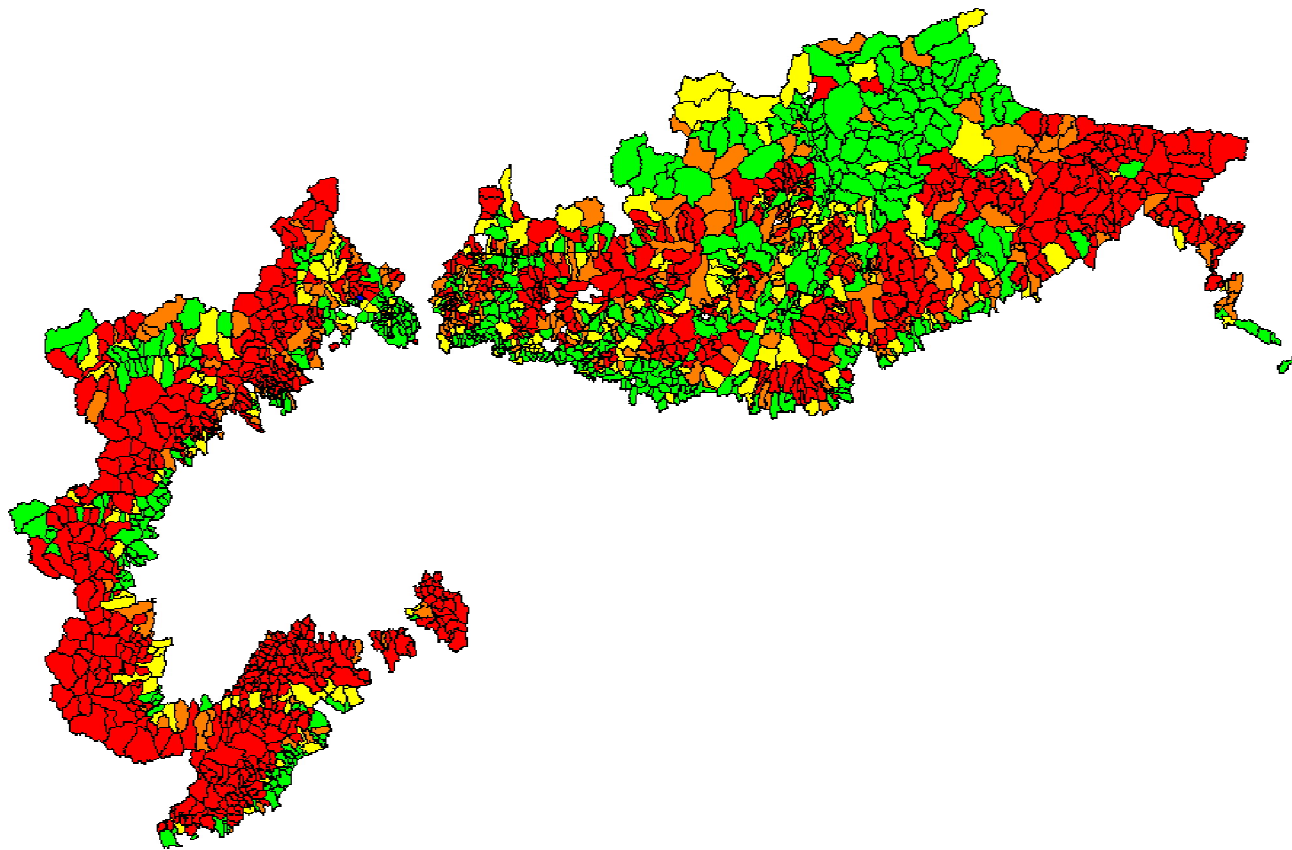
Michela Zucca

**Alpine communities are facing the
challenge of balancing quality of
life with maintenance of cultural
identity**

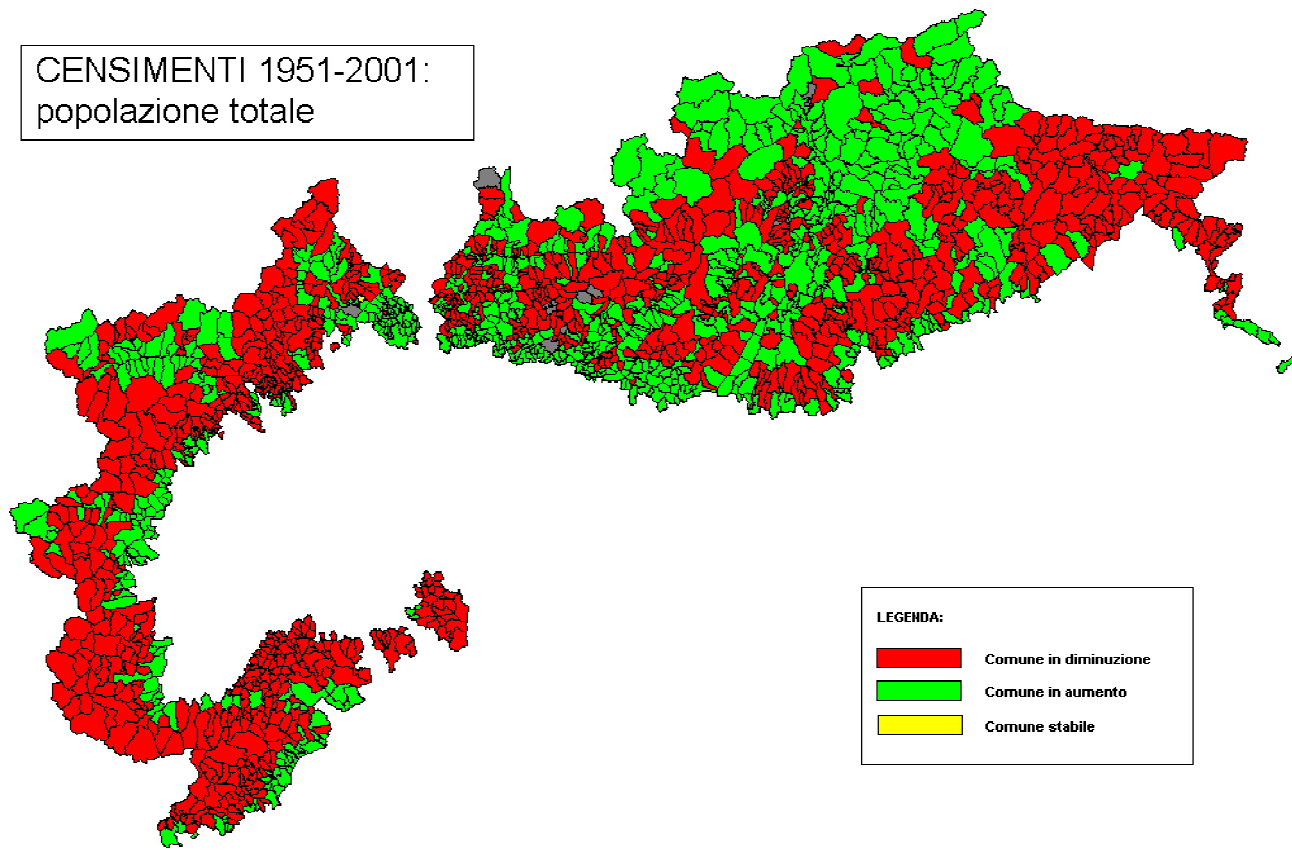
A photograph of a traditional wicker basket, likely used for carrying goods, resting on a lush green grassy field. The basket is made of light-colored, woven reeds or willow branches. The background is a soft-focus expanse of green grass, suggesting a rural or alpine setting.

**THE ALPINE CHAIN REPRESENT
A TERRITORY EXTREMELY
DIFFERENT AND COMPLEX**

**There are regions facing a strong
economic growth and depopulating
areas, standing a deep social and
cultural crisis**

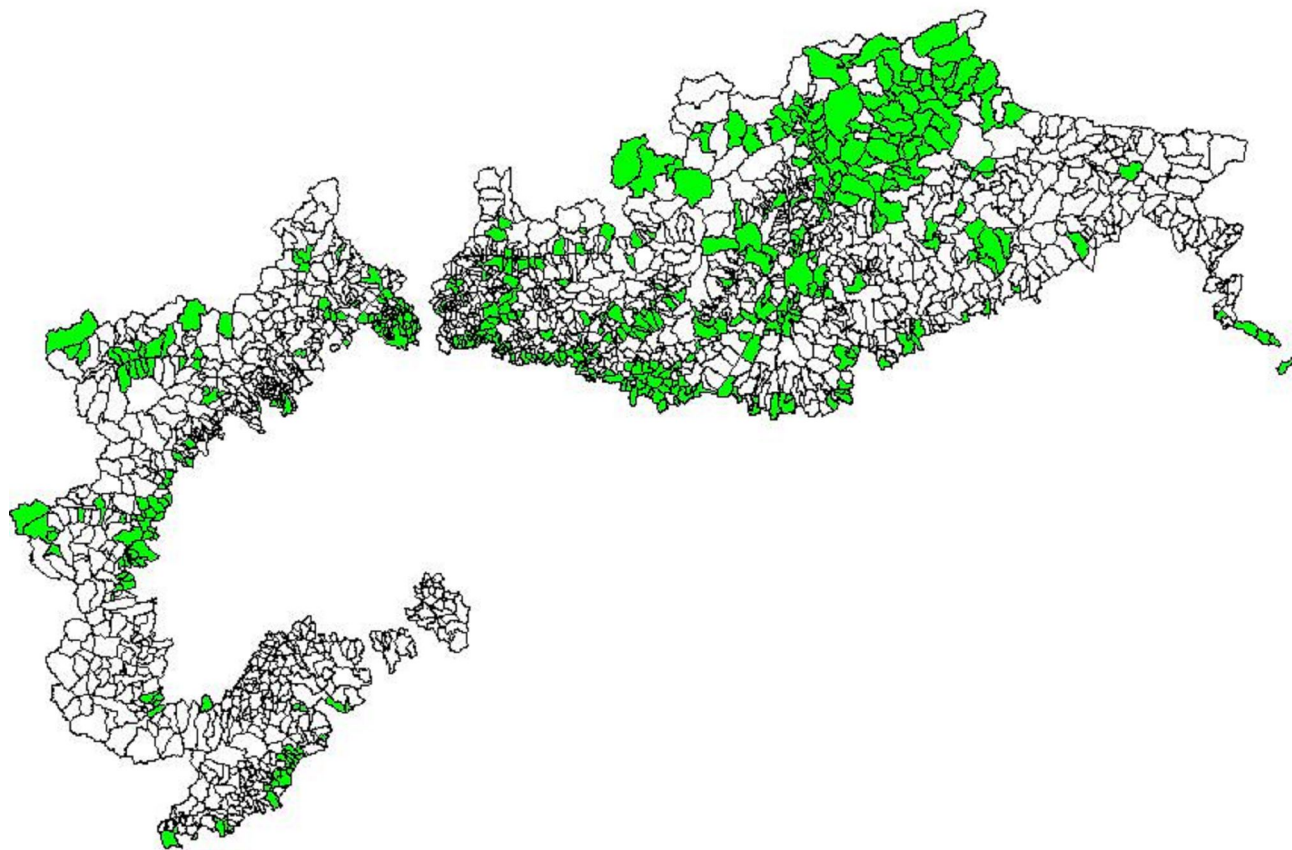


CENSIMENTI 1951-2001:
popolazione totale



LEGENDA:

Red	Comune in diminuzione
Green	Comune in aumento
Yellow	Comune stabile

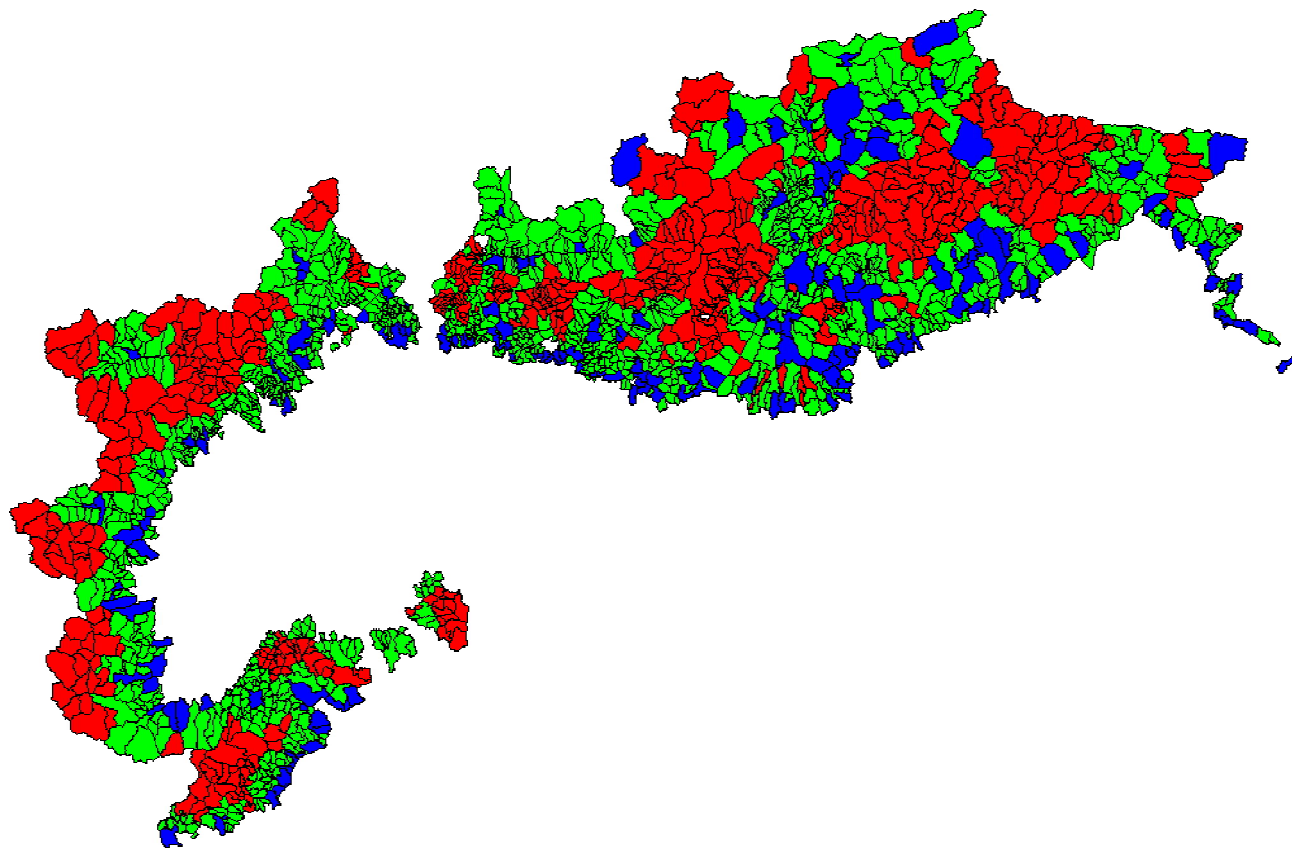


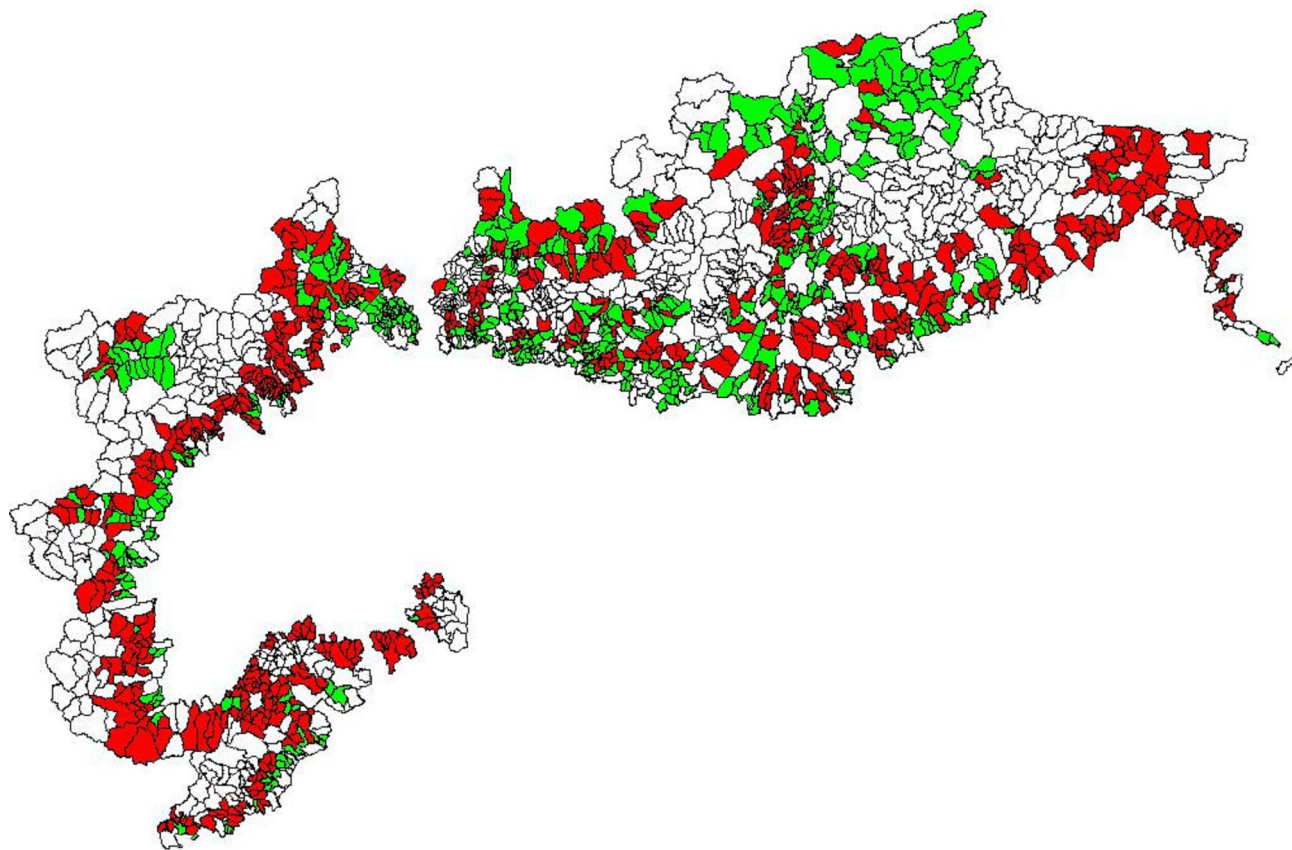
A wicker basket, made of light-colored, woven sticks, lies on its side on a green grassy field. The basket is empty and appears to be a simple, traditional design. The background is a soft-focus green field.

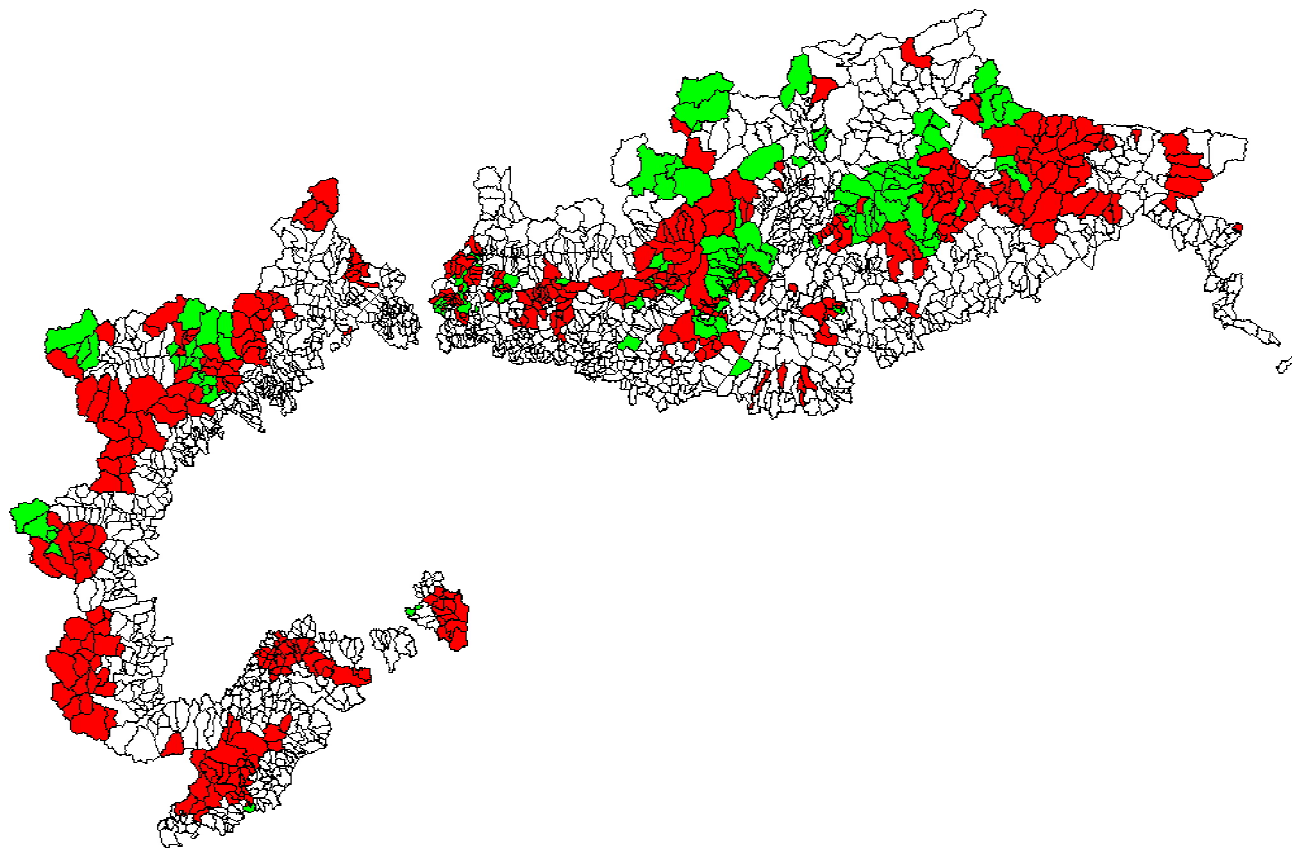
FIRST PROBLEM: TRAFFIC

On the opposite of what you think...

- **The majority of traffic in the Alps is caused by residents, not by tourists**
- **Transit traffic is profitable only where it stops**
- **Without labour perspective in the place, high speed roads first favour commuting then abandonment**





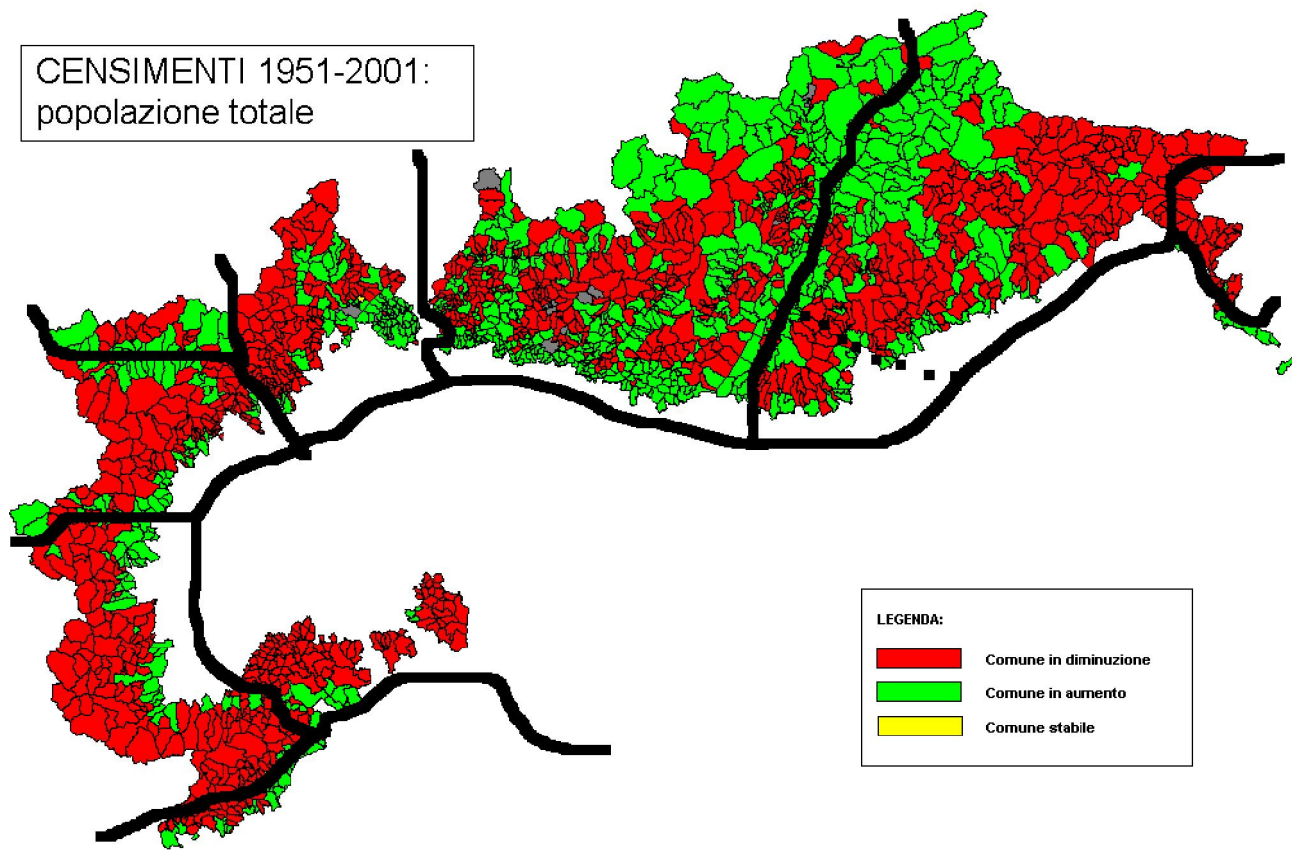


A wicker basket, likely made of dried reeds or willow, lies on a grassy field. The basket is empty and appears to be a traditional or rustic item. The background is a soft-focus green field.




MUNICIPALITIES WHERE PEOPLE LEAVE

- Are on the mountains**
- Are more than 20'-30' (30 km in winter) far from a 5.000 inhabitants town**
- Have less than 300 residents**

CENSIMENTI 1951-2001:
popolazione totale



LEGENDA:

	Comune in diminuzione
	Comune in aumento
	Comune stabile

A wicker basket, likely made of dried reeds or bamboo, lies on its side on a grassy field. The basket is empty and appears to be a traditional or handmade item. The background is a soft-focus green field.

**SECOND PROBLEM:
ESSENTIAL SERVICES ARE
DISAPPEARING BECAUSE TOO
EXPENSIVE**

- **Qualified labour chance in the mountains decrease**
- **Diminish possibilities of social and cultural life in little villages**

A wicker basket, made of light-colored, woven sticks, lies on its side in a field of green and brown grass. The basket is the central focus of the image, with its handle visible. The background is a soft-focus field of grass.

**THIRD PROBLEM:
LOW QUALITY OF LIFE (HERE
THERE IS NOTHING TO DO)**

- **In little villages there are no place or occasions for social life**
- **The native village is perceived as ugly and boring**
- **Traditional professions are despised and undervalued**

A photograph of a wicker basket lying on a grassy field. The basket is made of woven twigs and is tilted on its side. The background is a blurred green field.

FORTH PROBLEM: LOW SENSE OF IDENTITY

- **Winning cultural reference models are globalised and metropolitan**
- **Low consciousness of value of artistic, historic, cultural patrimony and heritage**
- **Waste of resources and impoverishment of territory**

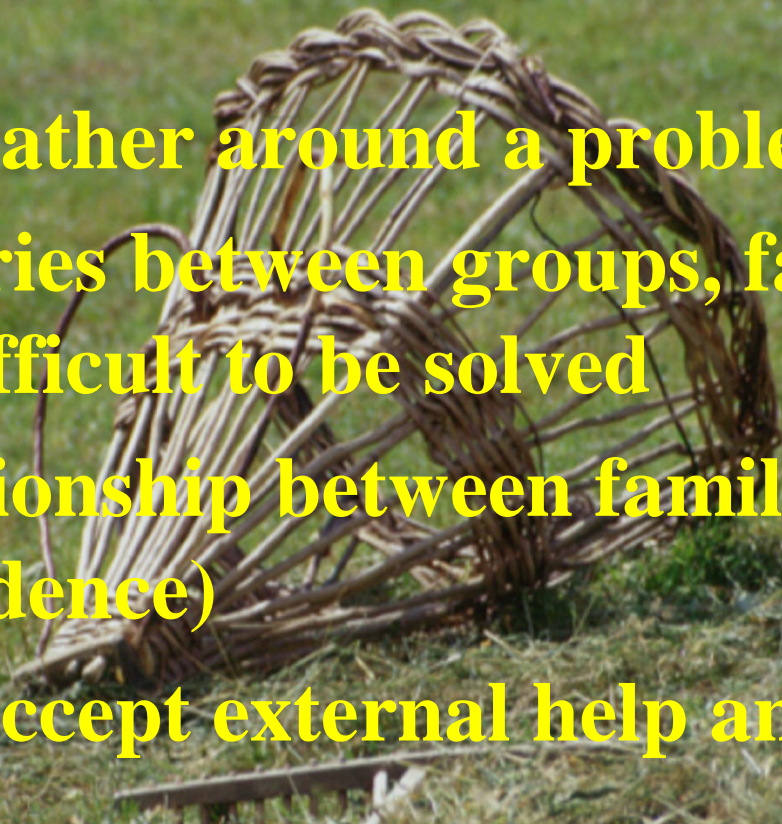
A wicker basket, made of light-colored, woven sticks, lies on a grassy field. The basket is tilted and appears to be empty. The background is a soft-focus green field.

FIFTH PROBLEM: LOW LEVEL OF INSTRUCTION MEDIUM HIGH INCOMES

- Vast territories depending on building enterprises and low level quality but high income**
- No interest for school**
- Who reaches a degree leaves**
- Cultural isolation, scarce interests toward new experiences**

SXTH PROBLEM: SOCIAL FRAGMENTATION

- **Parochialism**
- **Difficulty to gather around a problem**
- **Ancient rivalries between groups, families, individuals difficult to be solved**
- **No deep relationship between families (fear of criticism, diffidence)**
- **Difficulty to accept external help and expertise**
- **Isolation**



SEVENTH PROBLEM: YOUTH DISTRESS

- General sense of deficiency
- Desire to escape
- Drug
- Alcohol
- Risky behaviors
- Boredom
- “Unexplainable” crimes

A wicker basket, made of light-colored, woven sticks, lies on its side on a grassy field. The basket is empty and appears to be made of natural materials. The background is a soft-focus green field.

**CULTURE, TRAINING AND
A RICH SOCIAL LIFE ARE
THE ONLY REMEDIES TO
DEPRESSION**

(apart drug ed alcohol)

A woven basket, likely made of natural fibers, lies on a grassy field. The basket is the central focus of the image, with its intricate weaving pattern clearly visible. The background is a soft-focus green field, suggesting a rural or mountainous setting. The text is overlaid on the image in a bold, orange font.

**COOPERATION BETWEEN GROUPS
AND DESTRUCTION OF RIVALRIES
AND PAROCHIALISM ARE THE ONLY
WAY TO SUSTAINABLE
DEVELOPMENT**

**It is difficult but it is the only way to
build a future in the mountains**