

Cimego, village of steel and heretics.

Developing identity to build a global
project of sustainable economy

Michela Zucca



Centro di Ecologia Alpina

CIMEGO AND THE TERRITORY

- ◆ Geographical Collocation:
 1. Situated in Chiese Valley, 60 km far from Trento and 80 km from Brescia
 2. 620 m. high
 3. 400 inhabitants
- ◆ Alpine community situated in marginal and disadvantaged areas towards big capital and communication flows

Michela Zucca



Centro di Ecologia Alpina

The territory



Michela Zucca

WHY IN CIMEGO?

- ◆ It has been asked by local authority and associations
- ◆ It is the result of a process of evolution and cultural development lasting several years
- ◆ It has been strongly wanted by the inhabitants and the cultural associations of the village

Michela Zucca



Centro di Ecologia Alpina

THE PRECEDENTS

- ◆ Building of Rio Caino ethnographical trail
- ◆ Reasuration and re-use of the old forges
- ◆ Evaluation of traditional cooking
- ◆ Purchase of Marascalchi House

Michela Zucca



Centro di Ecologia Alpina

THE PRECEDENTS

- ◆ Lectures about heresy in Cimego and on the Alpine territory
- ◆ Organisation of didactic tourism about: popular culture, history of heresy and environment
- ◆ Training course for cultural-touristic guides
- ◆ Gathering and exhibition of old peasant tools
- ◆ European Social Found training course: “Doing business to produce culture: territory development agents”

Michela Zucca



Centro di Ecologia Alpina

DOING BUSINESS TO PRODUCE CULTURE

Territory development agents

- **Training professional course by the
European Social Found**

Michela Zucca



Centro di Ecologia Alpina

WHO HAS ORGANISED IT?

- ◆ **Kosmos Cooperative:**
active in sustainable development, professional training, environmental protection and bio architecture



Michela Zucca



WHO SUPPORTED IT?



- ◆ The Center of alpine ecology in Trento
- ◆ The Touristic consortium Valle del Chiese
- ◆ The research centre Judicaria in Tione

Michela Zucca



Centro di Ecologia Alpina

OBJECTIVES

- ◆ Training of qualified professionals able to create sustainable development
- ◆ Gathering of informations
- ◆ Participative planning
- ◆ Individuation of values to elaborate a development project
- ◆ Concrete elaboration of operations of sustainable development

Michela Zucca



Centro di Ecologia Alpina

THE TRAINING COURSE AND EUROPEAN UNION

- ◆ Use of Internet and multimedia programmes: communication means to know and work in the European Union
- ◆ Connections with European partners to elaborate common projects (Recite II-Ethnfestival)

Michela Zucca



Centro di Ecologia Alpina

PROJECT RECITE II

- ◆ Sustainable development project

Building better relationships among towns
and countryside using culture

- ◆ European Union founding

Michela Zucca



Centro di Ecologia Alpina

CIMEGO AND RECITE II PROJECT

Cimego, with Trentino partners, is in Recite and works with Portugal and Finland in these fields:

- ◆ Rio Caino: ethnographical trail to evaluate nature, environment and cultural-historical heritage
- ◆ Marascalchi House: musealisation

Michela Zucca



Centro di Ecologia Alpina

... CIMEGO AND THE FUTURE...

- ◆ **In the future, Cimego will be active in:**
 - **prolonge, improve and advertise “Rio Caino” ethnographical trail, opening a small refreshment place**
 - **open a tourist office**
 - **open a shop selling typical products**
 - **build “Casa Marascalchi” eco museum**
 - **organise “Eurofestival”, cycle of events about European culture and ethno music for young people**

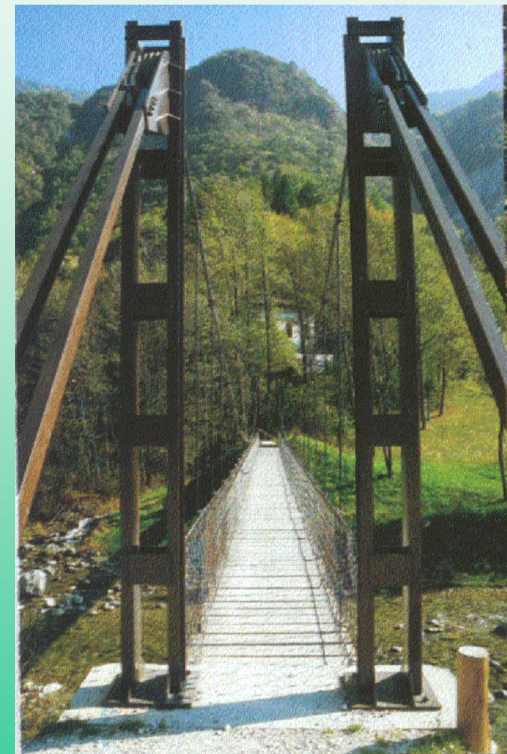
Michela Zucca



Centro di Ecologia Alpina

RIO CAINO

- **Inspection and classification of the trees growing on the ethnographical trail Rio Caino**
- **Project of tables on craftman jobs linked with natural resources**
- **Transmission of past cultural values: knowledge and respect for the environment**



Michela Zucca



MARASCALCHI HOUSE

Together with the people, survey cards have been filled in:

- FIELD
- DIALECT NAME
- ITALIAN NAME
- ETYMOLOGY
- MATERIAL
- MEASURE
- MANUFACTURE
- PERIOD
- PRESERVATION LEVEL
- DESCRIPTION
- FUNCTION

MUSEO ETNOGRAFICO
COMUNE DI CIMEGO

Scheda di rilevamento n.:
038/FIL

SETTORE
Filatura

NOME DIALETTALE
Molinèl

NOME ITALIANO
Filatoio

ETIMOLOGIA

DETTI

MATERIALE
Legno

MISURE

FABBRICAZIONE
Artigianale

EDOCA
fine '900

STATO DI CONSERVAZIONE
Buono

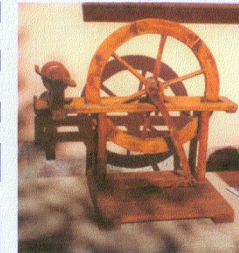
DESCRIZIONE
Struttura in legno che sostiene una ruota che può girare. La ruota è vuota con dei raggi lavorati. La circonferenza della ruota ha un solco, dove passa il filo collegato con una bobina in legno.

FUNZIONE
Filare la lana di pecora

STATO GIURIDICO
Proprietario :
Luogo di conservazione : Mostra etnografica
Donato da :

LEGENDA

AGR: Agricoltura	CAC: Caccia	CUC: Cucina	FOR: Fornaio	RAS: Rastrellato
ALL: Allevamento	CAM: Camera	EMI: Emigrazione	GIO: Giocattoli	SCA: Scalpellino,
BAC: Bachicoltura	CAN: Cantina	FAB: Fabbro	GU: Guerra	STA: Stalla
BAG: Bagno	CES: Castello	FAL: Falegname	MAL: Malga	TRA: Trasporto
BOS: Boscaiolo	CIA: Ciabattino	FIL: Filatura	MUR: Muratore	VIT: Viticoltura



Michela Zucca

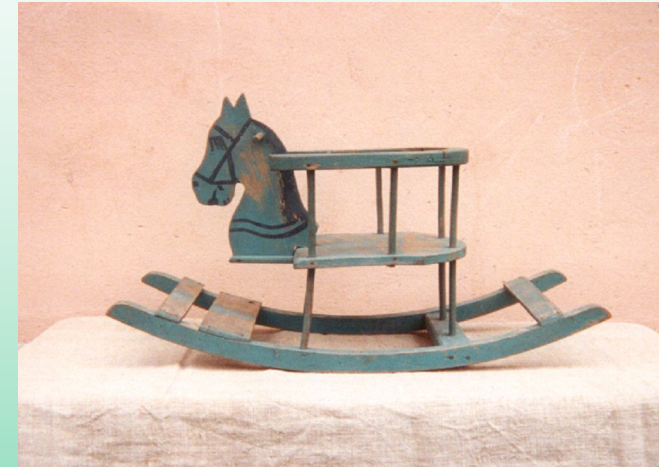


Centro di Ecologia Alpina

ETHNOGRAPHIC EXHIBITION

**Cultural association “La Fusina”
has catalogued the object of the
exhibition, to:**

- **make them available to build the
Casa Marascalchi Museum**
- **build an archive of traditional
objects in Cimego**



Michela Zucca



Centro di Ecologia Alpina



- **European event for young people**
- **Project Culture 2000**
- **Principal subject: ethno music for cultural and linguistic minorities**

Michela Zucca



ETHNOFESTIVAL

- **Cimego partner leader**
- **European partners:
France, Portugal,
Finland, Spain**



Michela Zucca



Centro di Ecologia Alpina

EUROPEAN SUSTAINABLE VILLAGE NETWORK

- The Network is being defined and built now, by participative planning, with the villages working in Recite and the help of the Multipolar Centres for sustainable development

Michela Zucca



Centro di Ecologia Alpina